



Ridge Creek Fire

Idaho Panhandle National Forests, Coeur d'Alene River Ranger District
Fire Information 208-557-8813

<https://inciweb.nwcg.gov/incident-information/idipf-ridge-creek>

August 5, 2023

Location: Approximately 3.5 miles east of the north tip of Hayden Lake, along the Hayden Creek Road (FSR 437) in the Ridge Creek drainage

Start Date: 8/3/2023 **Cause:** Human/Under Investigation **Size:** 1,062 acres **Containment:** 0%
Total Personnel: 60 **Engines:** 5 **Heavy Equipment:** 5 **Water Tenders:** 3 **Hand Crews:** 1

A Type 3 Incident Management Team took command of the fire at 6 AM this morning. Updates will continue from current sources. No changes to evacuation or closure statuses. Investigators have determined that the fire was human caused. An infrared flight conducted last night confirmed the fire has grown to 1,062 acres. Yesterday's fire behavior was active backing, flanking, group torching, and spotting from noon onwards. Crews were able to make important progress with laying hose and conducting checking actions in the Hells Gulch area on the southeast flank. Today, handline construction will continue in the Ridge Creek drainage at the heel of the fire, holding an important piece from any westward growth. Applied in multiple layers by large air tankers, the retardant line from the 406 road down to Hells Gulch is holding as of this morning. Interagency air resources from across the northwest will continue their assistance today. Fire managers will be keeping a close eye on the weather today for any wind shifts that accompany the thunderstorms, but the elevated RH (relative humidity) and possible precipitation could provide some much-needed aid to suppression efforts.

Fire managers and Kootenai County Emergency Management continue to assess the situation and will update the status as warranted. Follow Kootenai County Emergency Management Facebook Page for updates and sign up for automated Kootenai Alert for emergency alerts. <https://www.kcsheriff.com/186/Emergency-Management>

EVACUATION STATUS

There have been no changes to this notification since last update. A message from the Kootenai County Emergency Management: Out of an abundance of caution, residents within the boundary (see attached map) are being provided with a **GET READY** notification. The Ridge Creek Fire is in your area and it would be wise to consider planning and or packing in the event an evacuation becomes necessary. Residents are urged to create and maintain a defensible space and harden their home against the potential for wildfire. More information will be forthcoming, as it becomes available. Please continue to monitor official sources and call 208-446-2292 for any questions regarding evacuations.

CLOSURES AND SPECIAL MESSAGES

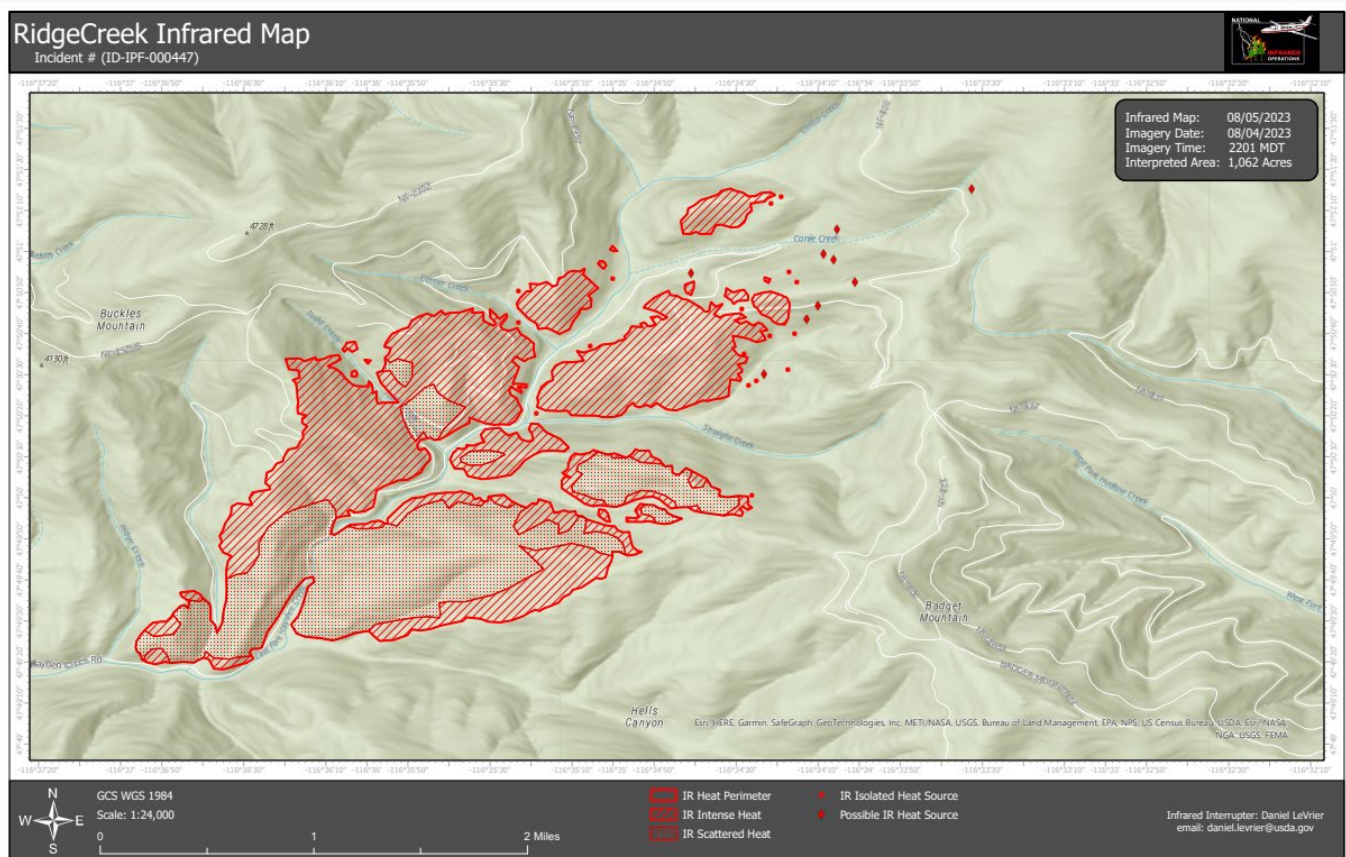
The Idaho Panhandle National Forests issued an emergency closure (Closure Order #01-04-03-23-002) effective August 4, 2023. This Order is for public and firefighter safety due to heavy fire traffic on the area impacted on the Coeur d'Alene River Ranger District, and prohibits all methods of travel (foot, mechanized, motorized and stock) on Forest Service Roads 392, 428A, 437, 1511, 1530, 1552, 1587 and Forest Service Roads 206 and 406 north of their junction, Forest Service Trails 69, 78, 234, and 802 as

well as within the described area.

Kootenai County Sheriff Office is advising Hayden Lake residents and all boaters to stay off the open water of Hayden Lake so firefighting aircraft can safely operate. Public access boat launches are closed. Please keep all boats off Hayden Lake until further notice. Thank you for your cooperation.

WEATHER AND FIRE BEHAVIOR

A chance of showers and thunderstorms between 2pm and 4pm, and again between 8pm and 5am. Mostly cloudy, with a high near 78. Minimum RH is 47 percent. Light and variable wind becoming west 5 to 8 mph in the morning. Chance of precipitation is 60%. New rainfall amounts of less than a tenth of an inch, except higher amounts possible in thunderstorms.

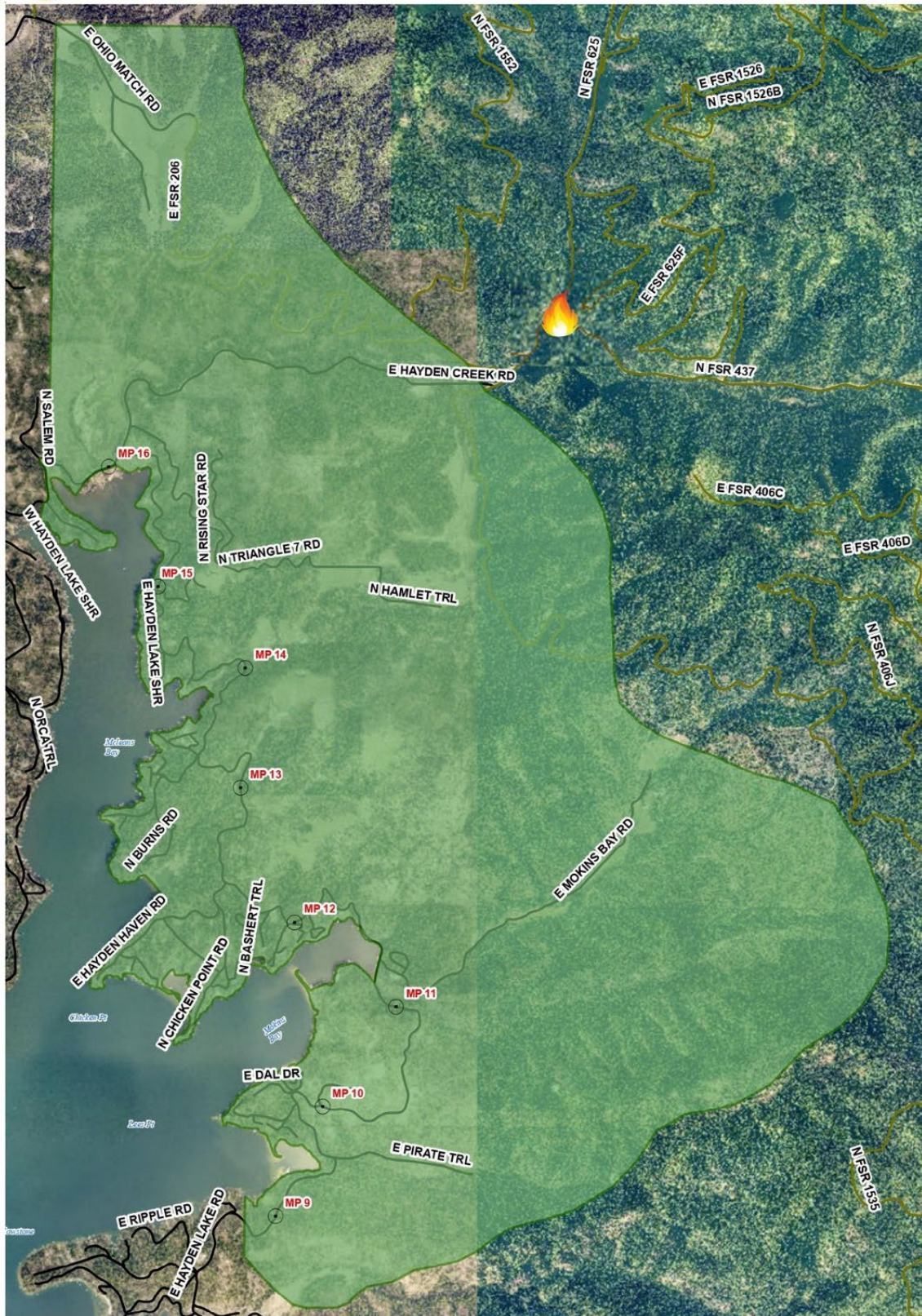




Ridge Creek Fire

Level 1: Get Ready

Kootenai County
August 4th, 2023



● Mile Markers
— LOCAL ROAD
— SEASONAL ROAD

0 0.25 0.5 1 Miles



Idaho Panhandle National Forests



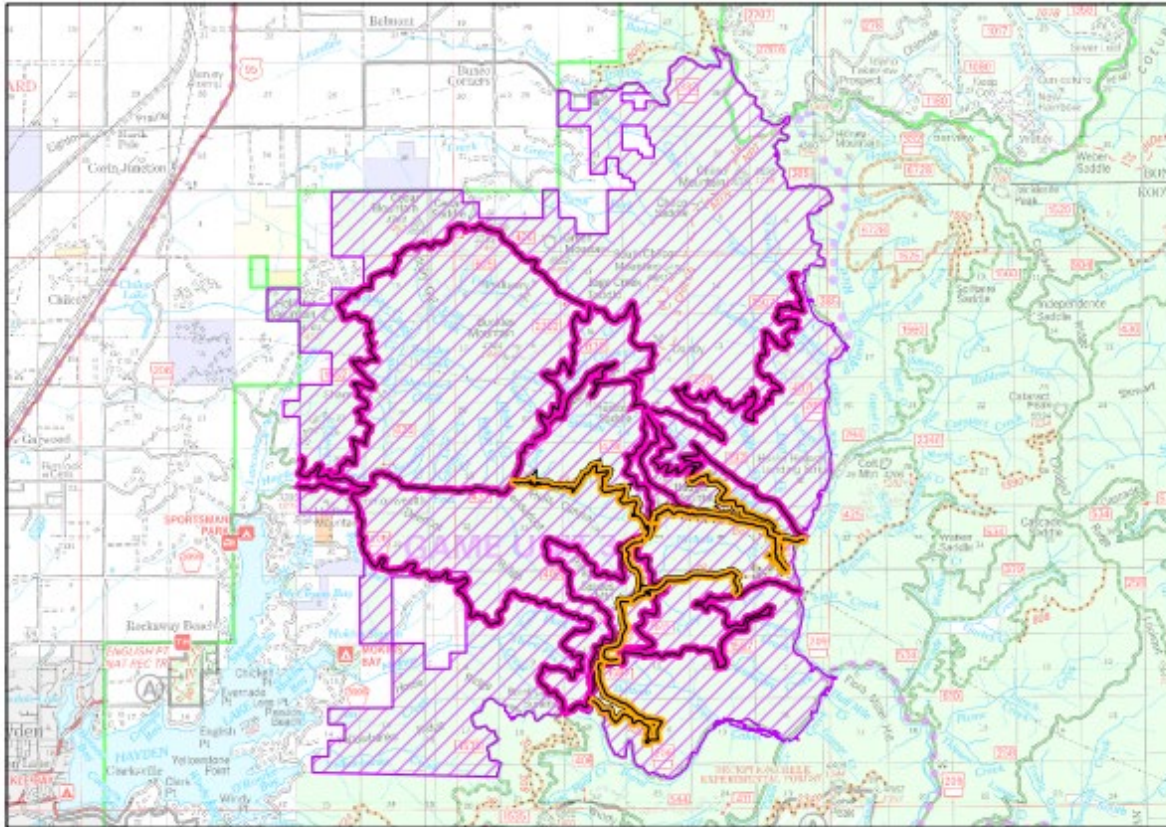
Forest Closure: Ridge Creek Fire Closure

Order Number: 01-04-03-23-002

Effective Date : AUGUST 4th, 2023

Rescind Date : SEPTEMBER 30th, 2023

Exhibit A



Closed Road
Numbers:

-206
-392
-406
-428A
-437
-1511
-1530
-1552
-1587

Closed Trail
Numbers:

-69
-78
-234
-802

Closures

- Road
- Trail
- Area

